

# TRUST CONSTRUCTIONS

## Samza Residency



"Trust" the Foundation of our homes...

Samza Residency, consist of beautiful extensive 2BHK - 10 deluxe flats. (5 floors, each floor consist of 2 deluxe flats, 2BHK each). Will be completed by April 2016. a complete residential building with car parking lots for each flat on 200 sq.yrds of land. It is located at the Pillar No. 179, express way - new airport road - upperpally - agricultural university road.

## Technical Specifications

### Toilets

Ceramic tile flooring and glazed tile dadoing upto 6'6" height.

### Kitchen

Polished Granite cooking platform with stainless steel sink, dadoing ceramic tiles upto 2' feet height above the platform.

### Sanitary Fittings

Concealed GI piping with all sanitary ware i.e., washbasin indian /European WC will be of light colour porcelain with CP fittings of standard quality.

### Electrical Fittings

Concealed copper wiring of standard make, power outlets of AC in hall and bedrooms, power outlets for geyser, cooking range, chimney, refrigerator, microwave oven etc.. Plug points for TV and audio system etc.. Single phase for flat and individual meter in panel board at Stilt floor.

### Amenties

Lift (6 persons Capacity)

Standby generator (for lift, common area, parking area and a single point connection in flat).

Intercom Facility for Flats.

Dish/Cable Connection point in flat.

### Structure

Reinforced Cement Concrete Structure.

### Super Structure

All Walls in Red Brick Work in Cement Mortar.

### Plastering

Two Coats Sponge finish in cement mortar for both internal & External walls.

### Doors

Main door teak wood with polishing teak shutter and internal doors frames teak with flush shutters.

### Windows

Aluminum frames with glass & safety grills.

### Interiors

POP ceiling borders in hall and each bedroom.

### Painting

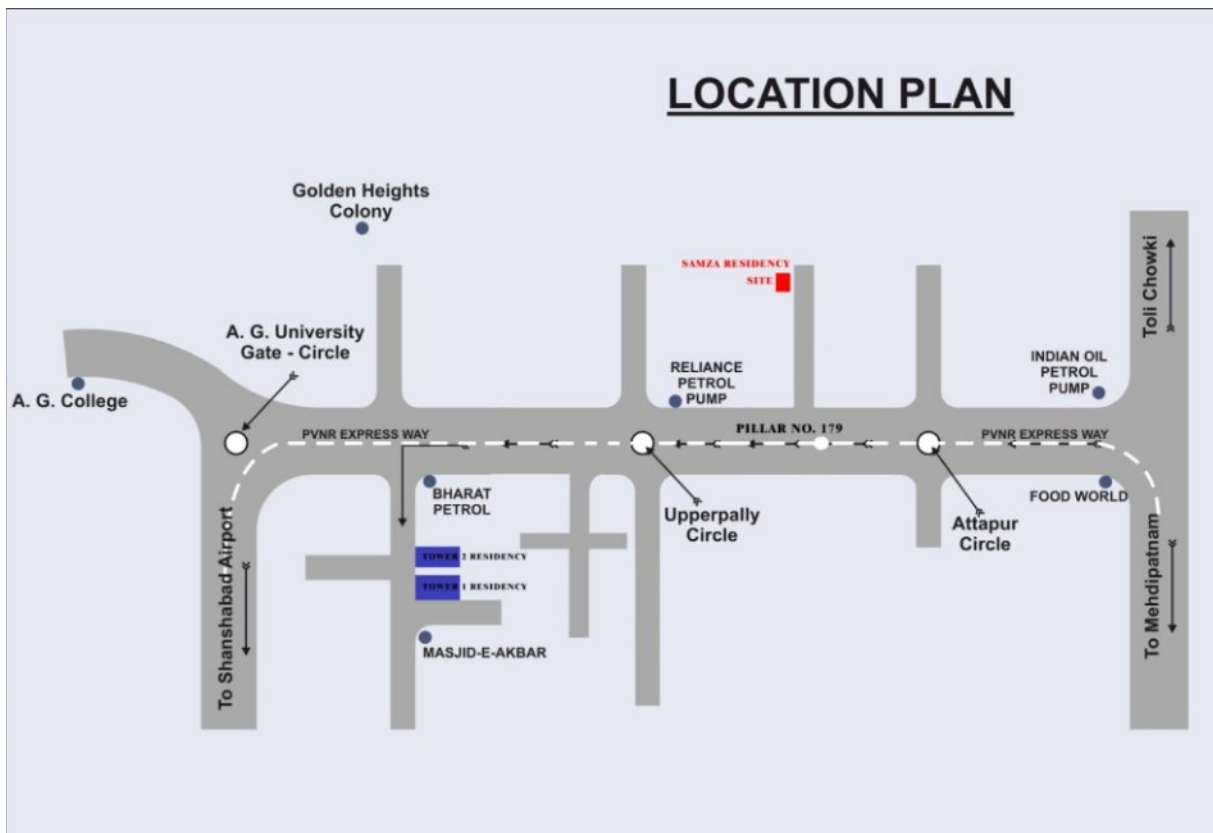
Internal walls, living dining and bedrooms with Birla wall care finish with Acrylic paints and external walls with cement based paint double coat.

### Flooring

Complete Vitrified in flat area and marble throughout the Corridor and Staircase.

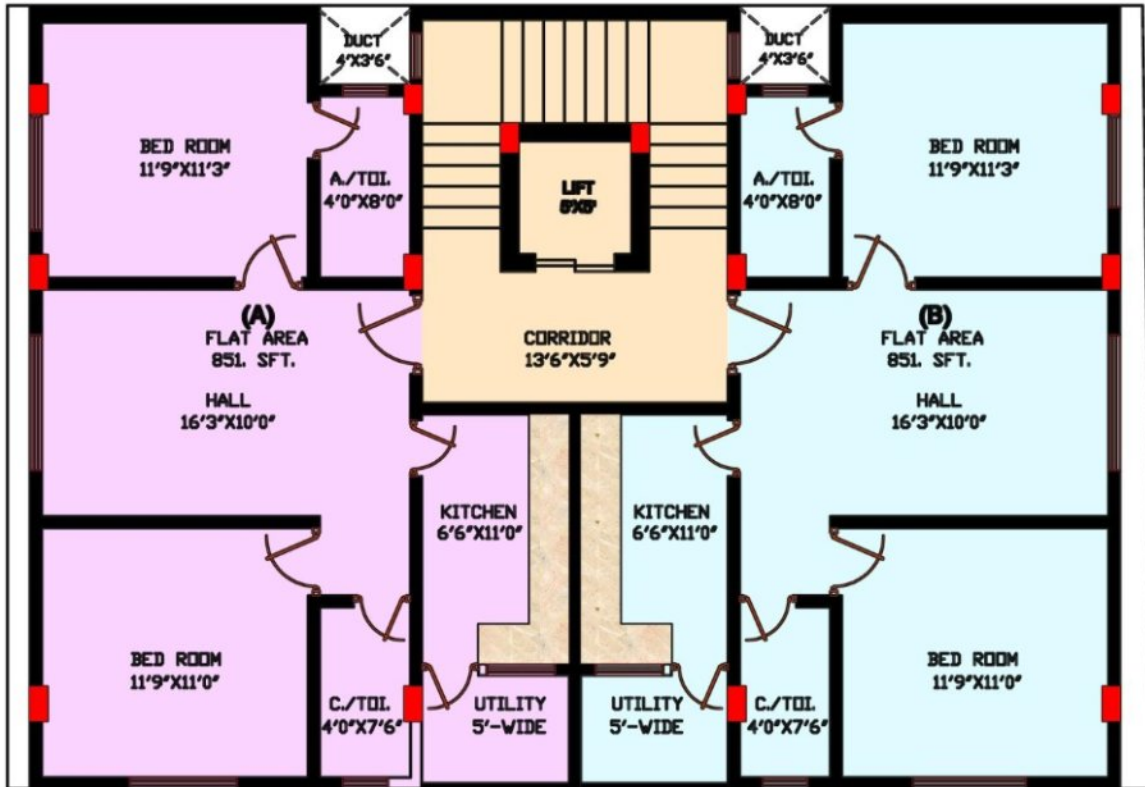
## Samza Residency - Location Plan

Samza Residency, consist of beautiful extensive 2BHK - 10 deluxe flats. (5 floors, each floor consist of 2 deluxe flats, 2BHK each). Will be completed by April 2016. a complete residential building with car parking lots for each flat on 200 sq.yrds of land. It is located at the Pillar No. 179, express way - new airport road – upperpally - agricultural university road.



# Samza Residency - Typical Floor Plan

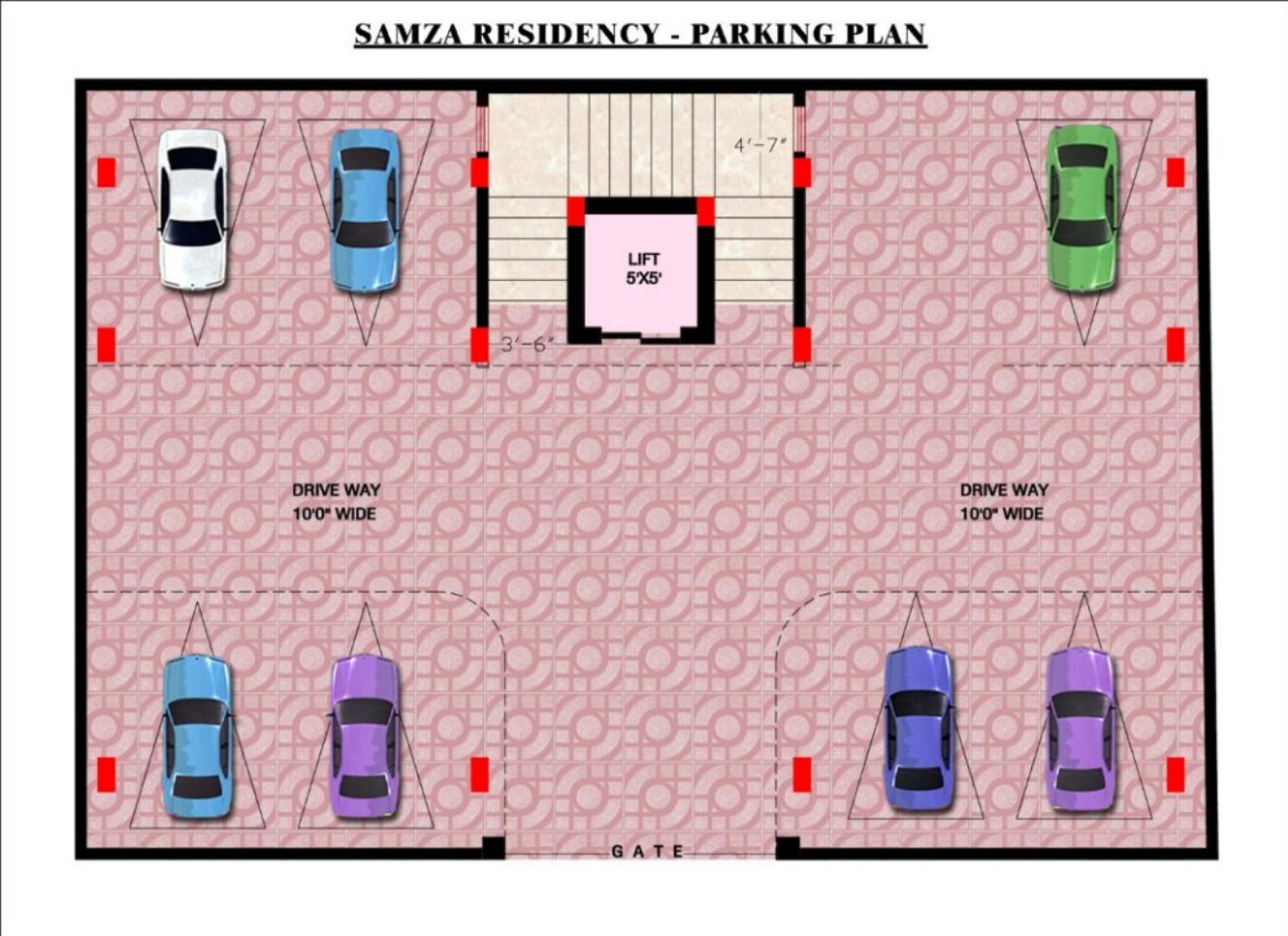
**SAMZA RESIDENCY - TYPICAL FLOOR PLAN**



**AREA STATEMENT**

FLAT	FLAT AREA	COMMON AREA	TOTAL AREA
A	709.00 SFT	142.00 SFT	851.00 SFT
B	709.00 SFT	142.00 SFT	851.00 SFT

# Samza Residency - Parking Plan



[www.trustconstructions.co.in](http://www.trustconstructions.co.in)